



Transportation with temperature (+12°C to -25°C) for all perishable foods on all types of vehicle as (Small, Mini Truck & Heavy Loading Truck)

LOW WEIGHT

HIGH STRENGTH

BETTER INSULATION

Refrigerated Container

Bharat Benz 3123R (GRP)



Isuzu D-Max



Tata 407 Pick up



Tata Ultra 912



Ashok Leyland ECOMET 1214 (GRP)

Type of Construction **Type A:** Heavy structure with Pre Fabricated Sandwich Panels with Cam Lock on all sides All panels fit together by Cam Lock, so container becomes air-tight fit
Type B: Heavy structure with Pre Fabricated Joint less Panel (Single Panel). All Side Panels & Top Panels made with Wooden structure and Bottom Panel with Metal structure

Wall Thickness Insulated wall thickness 80mm (Small Vehicle), 100mm (Mini Truck) & 125mm (Heavy Loading Truck)
Surface Material Outside Pre coated GI sheet Skin Thickness 0.8 mm or S.S. grade 304, Thickness 0.5mm
 Inside Pre coated GI sheet Skin Thickness 0.8mm or S.S. grade 304, Thickness 0.5 mm.

Type of Floor We are providing outside Pre coated GI sheet, Thickness 0.8mm & Inside 9mm or 19mm Marine Ply with FRP layer for water proof & top material as per below details
 Option -1 Aluminum 'T' profile for easy moving & air rotation.
 Option -2 Aluminum Checkered Plate.
 Option -3 S.S 202 rectangle pipe structure for better easy moving & air rotation.
 Option -4 Aluminium Corrugated Profile
 Option -5 S.S. Corrugated Profile



Aluminum T Profile



Aluminum Checkered Plate



S.S.Pipe



Aluminium Corrugated Profile



S.S. Corrugated Profile

Door : Single loft Door For Small Vehicle & Double Loft Door For Mini and Heavy Loading Truck



Double Loft with Window (Fully Open)

Door & Windows

Single & Double loft (fully open) insulated doors, hatch door (Window) & side door fitted fitted with double gasket with heavy door locking mechanisms for special transport segment. Drop "T" handles gear, Rear door hinges, Rear door hinges bracket, Seals Rubber Gasket,



Side Door



Single Loft Door



Door Curtain

As per customer requirement we provide PVC Door curtain. As per your door size



Base Frame

Between container & body chassis, it is design on M.S. profile with laser cut aesthetic look & M.S. pipe frame will be complete with U bolts & Fasteners.



Ladder for UP and DOWN on Container

Useful for up down on container & easy services for refrigeration unit for large truck.

Totally strong & welding with container.



Rubber Buffer Useful for backside door protection



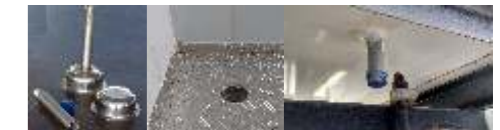
Foot Steps :

Steps foot with M.S. & Aluminium Chequered Plate



Seal Gaskets :

Rubber Gasket with 4 lips for better fitment of Door.



Drainage System :

Made by S.S. & for drain the water coming from system



Side Marker Light : Functions of side marker lamp & side reflex reflector



LED Light : Vapor & weather proof LED Light



Radium Line : Front side, back side yellow reflection radium line for night time.



Drop "T" Handles : Trailer door gears made by S.S. material



Rear Door Hinges & Bracket : S.S. Hinges



Hook on Container : For side lifting hook for easy shifting One to another vehicle

Paint : Weather resistance paint with primer coat-zinc rich epoxy primer, intermediate –epoxy polyamide primer, top coat – bituminous paint
 In Optional Accessories : Strip Curtain, Side Door, Hatch Door, Storage Rack or Self (made by S.S. Pipe)

Modified Design



Bucket Structure: Design on bended Aluminium panel with 4 mm thickness & SS Corner Profile for solid covering of container.



Sub Frame : Z-section with MS sheet having 4 mm thickness.



Door Frame : Door frame "C" Profile having 2mm SS Sheet.

Refrigerated & Eutectic Mobile Container with GRP Panel

GRP stands for "glass-fibre reinforced plastic", a high grade composite material, consisting of polyester resin reinforced with glass fibre matting.

GRP is highly suitable for refrigerated containers with higher stability, low weight and for exceptional resistance to corrosion.

Features:

- GRP Container are extremely robust due to their permanent stability and absolute resistance to corrosion
- Long-term weather resistance enables many years of outdoor use
- Low weight is particularly advantageous for refrigeration transportation with low payload and low operating cost
- Smooth interior and exterior surfaces make GRP Container easy to clean
- GRP panels are UV resistant
- GRP Panels is resistance to chemical and fire



ICE MAKE offers GRP Container up to maximum 24 feet joint-less panel in length



MINIMUM MAINTENANCE | NO LOAD ON VEHICLE ENGINE | LOWER OPERATING COST

HIGHLY RELIABLE | SUBSTANTIAL POWER SAVING | NO EMISSIONS

ICE MAKE – Eutectic Mobile Container is designed for multi deliveries of Ice cream, Frozen Foods, Bakery Products and Fruits & Vegetables distribution.



- Assured refrigeration performance with total reliability
- Super fast temperature pull down up to -24°C
- Suitable for multiple Deliveries door openings
- Unique Eutectic Plate design offers maximum Heat Transfer surface area
- Non-toxic PCM filled in sealed pack - which will not leak

ICE MAKE – Eutectic System are designed to operate in vehicles that have been suitably insulated for fresh or frozen produce transportation. The Eutectic Plates are mounted inside a chamber which is separate from the main load system. The product inside the storage compartment is cooled on required temperature either for Frozen Application (-24°C) or Chilled Application (+2°C to 8°C) by the PCM pads. The connected power supply to charge should be 3 phase.

EUTECTIC MOBILE CONTAINER



Technical Specification

- Insulation Thickness** : For Frozen Application : 100 mm + 25 mm (Eutectic Plate)
 For Chilled Application : 80 / 100 mm + 25 mm (Eutectic Plate)
- Refrigeration System** : Air Cooled With Electric Support
- Compressor Type** : Semi shield / Scroll compressor
- Unit Running Time** : For Frozen Application : 10 to 12 Hr.
 For Chilled Application : 4 to 5 Hr.
- Temperature** : For Frozen Application : -24°C after charging & -12°C after 12 To 14 Hr.
 For Chilled Application : 0°C after charging & +4°C after 4 to 5 Hr.
- Back up time** : For Frozen Application : 12 to 14 Hr.
 For Chilled Application : 4 to 5 Hr.



Advantage on Eutectic Vs Diesel Engine Refrigerated Container

	Eutectic Mobile Container	Diesel Engine Operated Container
Vehicle Engine Maintenance	Less (No load on Vehicle Engine)	High (Run By only Vehicle engine)
Reefer Unit Maintenance	Easy Available & Repair by Local Technician	Repair by Companies Technician & High Cost
Carbon Emission by Reefer Unit	Zero	High

* Suitable Up to 14 Feet Vehicle



TRANSPORT REFRIGERATION



Refrigerated Container



Bunk House

